



VULCAN

Outdoor Heating

55,000 BTU Concrete Look Aluminum Fire Table



Convertible burner
Propane/
Natural Gas



Ships complete in
1 box!



Easily converts to a table
with the fire bowl lid. (included)

Exclusive Color for Hearth Industry



Outdoor
Vinyl
Cover
Included



Includes Black firebeads

Size:
38" L x 38" W x 13" H
96.5cm L x 96.5cm W x 33cm H

Carton Size (6A mail order packaging)
39.8" x 39.8" x 14.57"
101cm x 101cm x 37cm

GW/NW (lbs): 61.73/57.2
GW/NW (KGS): 28/26

Certification: CSA
BTU's: 55,000
Energy Source:
Convertible PROPANE/NAT GAS

FEATURES

- Beautiful carbon black concrete look aluminum fire pit with 304 grade stainless steel burners in black high temperature painted steel pan
- Electronic ignition for easy lighting
- A fabric firepit cover is included.
- Uses a standard 20 LBS propane tank (not included).
- Includes kit to convert to natural gas. Natural gas hose sold separately part-NL-NGHOSE
- Provides heat and decorative functions; includes 18 lbs (8 kgs) of ½ round black firebeads for a stunning shimmery look.

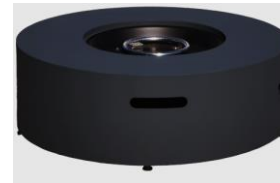
55,000 BTU Concrete Look Aluminum Fire Table



Convertible burner
Propane/
Natural Gas



Ships complete in
1 box!



Easily converts to a table
with the fire bowl lid. (included)

Exclusive Color for Hearth Industry



Outdoor
Vinyl
Cover
Included



Includes Black firebeads

Size:
38.19" D x 13"
96.5cm D x 33cm

Carton Size (6A mail order packaging)
42.5"L x 42.5"W x 14.56"H
107cm L x 107cm W x 38cm H

GW/NW (lbs): 77.16/63.93
GW/NW (KGS): 35/29

Certification: CSA
BTU's: 55,000
Energy Source:
Convertible PROPANE/NAT GAS

FEATURES

- Beautiful carbon black concrete look aluminum fire pit with 304 grade stainless steel burners in black high temperature painted steel pan
- Electronic ignition for easy lighting
- A firepit cover is included.
- Uses a standard 20 LBS propane tank (not included).
- Includes kit to convert to natural gas. Natural gas hose sold separately part-NL-NGHOSE
- Provides heat and decorative functions; includes 18 lbs (8 kgs) of black ½ round firebeads for a stunning shimmery look.

Cost USD: \$404.94

FOB: Shanghai

40'HC: 154 units



Rectangle Convertible Firetable



Size:

48" x 34.05" x 25.19"

122cmL x 86.5cmW x 64cmH

Carton size:

51.97" x 37.80" x 8.66"

132cm x 96cm x 22cm

GW/NW (lbs):83.78/72.75

GW/NW (kgs): 38.0/33.0

This box is UPSable

Certification: CSA/ETL

BTUs: 55,000

Energy Source: Propane/ Nat Gas

FEATURES

- Beautiful carbon black colored or Grey colored aluminum fire pit with 304 grade stainless steel burners in black high temperature painted steel pan
- Electronic ignition for easy lighting
- Uses a standard 20 LBS propane tank (not included).
- Includes kit to convert to natural gas. Natural gas hose sold separately part-NL-NGHOSE
- ALL Black Crushed Fireglass 8KGS
- PVC waterproof Firepit Cover
- ISTA-1A MO Pack



Includes Black fire Glass



Ships
complete in 1
box!



Exclusive design
& color for Hearth
Industry

Available in
Carbon


VULCAN

Item number: FP-518 BK Carbon black or FP-518 GY Grey



Accessories

Complement your purchase with these great accessories; burners, fireglass, wind guards, covers, and more.

1/2" / 1.2cm Reflective Fire Glass

- Add brilliance to any fire.
- Will not burn or melt.
- Does not emit any offensive odors or by-products. No soot or smoke.
- Retains and generates more heat than ceramic logs.
- Mix and match colors for your own unique look.
- Available in 5 stunning colors.
- Available in 10lb /4.5 kg jars or 40lb/18kg cartons.



FG-002 Luminous Catalina Blue



FG-003 Luminous Burnt Amber



FG-004 Luminous Ice crystals



FG-005 Luminous Midnight Sparkle



FG-007 Luminous Sea Green

Product Specifications

ITEM NUMBER	COLOR	CONTAINER SIZE	GW/NW (LB)	QTY	MASTERPACK PACK SIZE
FG-002	Luminous Catalina Blue	10lb/4.5kg jars	25.35 / 10	2	12.6" x 6.7" x 9.8"
FG-002-40	Luminous Catalina Blue	Jar size: 5.3"D x 8.46"H 40lb/18.14 kg carton	42 / 40	1	15.75" x 11.8" x 9.8"
FG-003	Luminous Burnt Amber	10lb/4.5kg jars	25.35 / 10	2	12.6" x 6.7" x 9.8"
FG-003-40	Luminous Burnt Amber	Jar size: 5.3"D x 8.46"H 40lb/18.14 kg carton	42 / 40	1	15.75" x 11.8" x 9.8"
FG-004	Luminous Ice Crystal	10lb/4.5kg jars	25.35 / 10	2	12.6" x 6.7" x 9.8"
FG-004-40	Luminous Ice Crystal	Jar size: 5.3"D x 8.46"H 40lb/18.14 kg carton	42 / 40	1	15.75" x 11.8" x 9.8"
FG-005	Luminous Midnight Black	10lb/4.5kg jars	25.35 / 10	2	12.6" x 6.7" x 9.8"
FG-005-40	Luminous Midnight Black	Jar size: 5.3"D x 8.46"H 40lb/18.14 kg carton	42 / 40	1	15.75" x 11.8" x 9.8"
FG-007	Luminous Sea Green	10lb/4.5kg jars	25.35 / 10	2	12.6" x 6.7" x 9.8"
FG-007-40	Luminous Sea Green	Jar size: 5.3"D x 8.46"H 40lb/18.14 kg carton	42 / 40	1	15.75" x 11.8" x 9.8"



Choose from two different packaging options:

Available in 2 Pack of 10 lb Jars




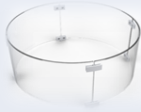



or 40' Bulk Carton





Fire Table Wind Screens

- High quality clear tempered glass safety screen is durable and withstands high heat while allowing you to enjoy the beautiful flame
- Polished aluminum fire-resistant brackets
- Blocks wind and keeps burn area secure
- For use with propane or natural gas fire tables
- UPS Shipping boxes

Image	Item Number & Desc.	Size	Carton Size	GW/NW (LBS/KGS)	For Use With Paramount Firepits
	WGG-RD23-001 CH Round 23"	22.80"D x 6.69" H 57.91cmD x 17cmH (6mm thickness)	19.29" x 11.4" x 9.84" 49cm x 29cm x 25cm	10.25/8.49 (4.65/3.85)	FP-301-BZ or with burners 21"D
	WGG-RD-001 Round 28"	28.35"D x 7.87" H 72cmD x 20cmH (5mm thickness)	19.29" x 11.4" x 9.84" 49cm x 29cm x 25cm	13.67/11.9) (6.2/5.4)	<i>FP-251, FP-285, FP-303-HB or firepits with burners 26" D</i>
	WGG-SQ-001 Square 21"	21.26" x 21.26" x 5.9"H 54cm x 54cm x 15cmH (5mm thickness)	27.55" x 9.84" x 5.51"H 70cm x 25cm x 14cm	10.14/7.94 (4.6/3.6)	FP-272-HB, FP-272-DW or firepits with burners 18"SQ
	WGG-RECT-001 Rectangle 30"	30.3"L x 15.4" W x 6.9" H 77cm L x 39cm W x 17.5cmH (5mm thickness)	36.6" x 10.62" x 5.51"/ 93cm x 27cm x 14cm	13.45/9.92 (6.1/4.5)	<i>for use with Paramount fire pits FP-341-xx</i>
	WGG-RECT-002 Rectangle 42.5"	42.51" x 14.56" x 7.87" 108cmL x 37cmW x 20cmH (5mm thickness)	27.56" x 11.81" x 6.10"/ 120cm x 30cm x 13cm	23.14/22 (10.5/10)	<i>for use with Paramount fire pits FP-415 and FP-416</i>