

EXCELiner Technical Information

Certification

EXCELiner is tested and listed by Warnock Hersey Professional Laboratories to the following standards:

ULC S-635 - Standard for relining existing masonry chimneys in Canada.

ULC S-640 - Standard for liners for new masonry chimneys in Canada.

UL 1777 - Standard for liners in new and existing masonry chimneys in the USA.

The installation requirements vary depending on which Standard your installation must meet, particularly with respect to the requirements for insulation and clearance from the liner. You must insure that your EXCELiner is installed in accordance with your local building codes.

EXCELiner is available in 5", 6", 7" and 8" diameters

EXCELiner is certified for installation in combination with all certified brands of flexible chimney liner.

Applications

EXCELiner is certified as a chimney liner for use on appliances that burn:

- Wood
- Oil
- Natural or LP Gas

Allowable Flue Gas Temperatures

Max Continuous	650°C (1200°F)
Brief Forced Firing	925°C (1700°F)
Tested To	1150°C (2100°F)

Clearance to Combustible Materials

The clearance between EXCELiner and surrounding combustible and non-combustible materials varies with the type of installation. Please refer to the installation instructions for specific details for your application.

Construction

Single wall :

Type 304 stainless steel either .016" thickness or .025" thickness.

Seam :

Continuous seam welded.

Insulation :

Optional (required for some applications)
Foil backed ceramic liner.

EXCELiner Engineering and Design Considerations

EXCELiner is a fast, cost effective solution to the following chimney situations:

To repair cracked or damaged clay tile liners. EXCELiner is designed and approved to replace clay tile liners which have become cracked from age, misuse, or chimney fires. EXCELiner can be used to reline structurally sound masonry chimneys where the liners have deteriorated due to chimney fires, spalled tiles, moisture damage or eroded mortar joints.

To improve the safety, performance and efficiency of wood or gas burning stoves and fireplace inserts. By reducing the chimney to the correct size for the appliance EXCELiner improves draft, reduces fuel consumption, and helps insure consistent operation. There is less creosote formation in a properly sized flue which decreases the probability of a chimney fire.

EXCELiner is listed to UL and ULC standards by Warnock Hersey Professional Laboratories to be used as stainless steel liner in a new chimney, instead of a clay tile liner. Unlike clay tile liners, EXCELiner can withstand chimney fires without damage and comes with a lifetime warranty.

EXCELiner is easier to clean

EXCELiner's smooth surface accumulates less creosote than a flexible liner and is much easier to clean.

Excel has been tested and listed to the UL S-635 ULC S-640 and UL 1777 chimney liner standards by Warnock Hersey Professional Laboratories.

WARNOCK HERSEY

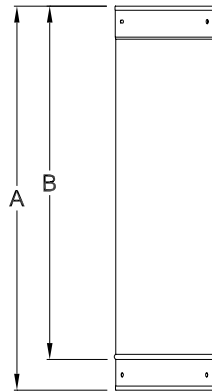


Listing # 195-7034-02
Listing # 192-5119

EXCELiner Product Descriptions

Fixed Lengths (LL4, LL3, LL2, LL1) EXCELiner is available in 4', 3', 2' and 1' lengths. EXCELiner components fasten together with 100% stainless steel pop rivets which are supplied with the liner. The holes and slots for the rivets are factory pre-punched so no drilling is required. The male and female ends are hemmed to make the liner more rigid and reduce the likelihood of cutting yourself during installation.

INCHES

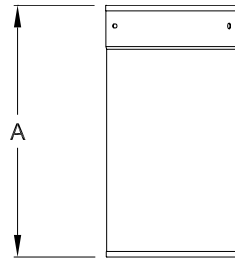


Liner Length 12-24 Dimensions				
	LL1 (12)		LL2 (24)	
Diameter	A	B	A	B
5	11 7/16	9 9/16	23 3/8	21 1/2
6	11 7/16	9 9/16	23 3/8	21 1/2
7	11 7/16	9 9/16	23 3/8	21 1/2
8	11 7/16	9 9/16	23 3/8	21 1/2

Liner Length 36-48 Dimensions				
	LL3 (36)		LL4 (48)	
Diameter	A	B	A	B
5	35 5/16	33 7/16	47 1/4	45 3/8
6	35 5/16	33 7/16	47 1/4	45 3/8
7	35 5/16	33 7/16	47 1/4	45 3/8
8	35 5/16	33 7/16	47 1/4	45 3/8

Adjustable Lengths (LLA4 and LLA1) Adjustable lengths are available in 4' and 1' lengths. Adjustable lengths are used to adjust the length of the system without cutting. *Note: Adjustable lengths must be installed above a fixed length or they will not adjust. They should not be installed immediately above a support, tee or elbow.*

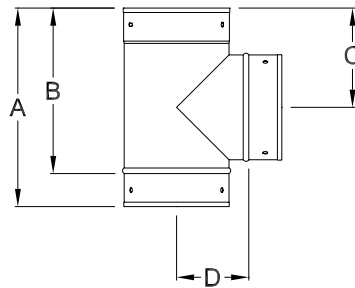
INCHES



Adjustable Length Dimensions		
Diameter	A (LLA1)	A (LLA4)
5	11 7/16	47 1/4
6	11 7/16	47 1/4
7	11 7/16	47 1/4
8	11 7/16	47 1/4

Split Base Tee (LT) The flange for the tee mouth is formed into the vertical tee body to provide a strong connection while minimizing projection to facilitate installation in tight flues. The tee mouth fastens to the body with heavy duty stainless steel screws which install through the inside of the mouth.

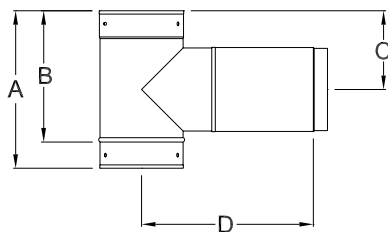
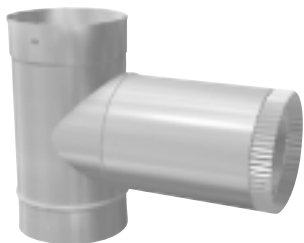
INCHES



Liner Tee Dimensions				
Code	A	B	C	D
5LT	10 1/4	8 3/8	5 1/8	3 5/8
6LT	11 1/4	9 3/8	5 5/8	4 1/8
7LT	12 1/4	10 3/8	6 1/8	4 5/8
8LT	13 1/4	11 3/8	6 5/8	5 1/8

Adjustable Snout Tee (LTA) The LTA eliminates the difficult job of cutting and fastening a short horizontal section of liner in the breeching. The horizontal section adjusts from 9 3/4 to 15 3/4.

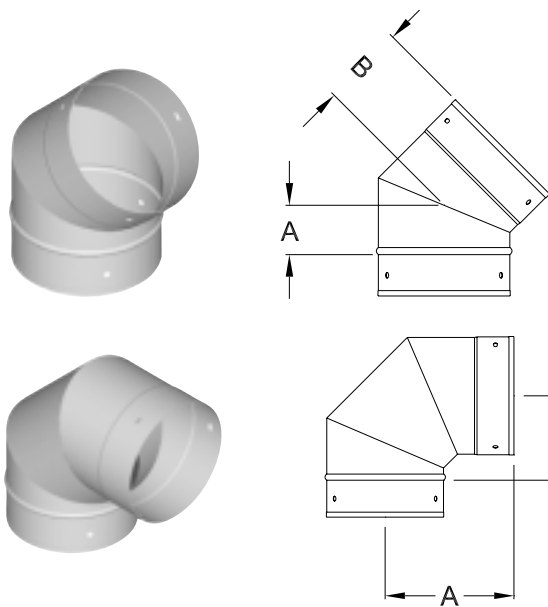
INCHES



Snout Tee Dimensions					
Code	A	B	C	D MIN.	D MAX.
5LTA	10 1/4	8 3/8	5 1/8	9 3/4	15 3/4
6LTA	11 1/4	9 3/8	5 5/8	10 1/4	16 1/4
7LTA	12 1/4	10 3/8	6 1/8	10 3/4	16 3/4
8LTA	13 1/4	11 3/8	6 5/8	11 1/4	17 1/4

EXCELiner Product Descriptions

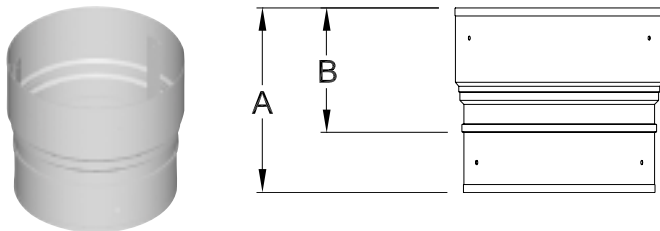
Elbows (LE30, LE45 & LE90) Used when a directional change is required.



INCHES

Elbows dimensions		
Code	A	B
5LE30	1 11/16	3 3/16
6LE30	1 13/16	3 5/16
7LE30	1 15/16	3 7/16
8LE30	2 1/16	3 9/16
5LE45	2	3 1/2
6LE45	2 1/4	3 3/4
7LE45	2 7/16	3 15/16
8LE45	2 5/8	4 1/8
5LE90	6 1/16	3 13/16
6LE90	6 9/16	4 5/16
7LE90	7 1/16	4 13/16
8LE90	7 9/16	5 5/16

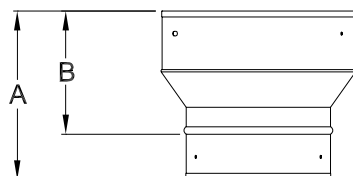
Flex Liner Adapter (LAF) Designed to connect EXCELiner to a flexible liner where the rigid liner is installed below the flexible. It can be also used to connect a flexible liner to an appliance collar. *Note: The EXCELiner male end will fit into most brands of flexible liner (except for some models of flex which are intentionally made undersize) so no adapter is generally required when the flex is installed below the rigid.*



INCHES

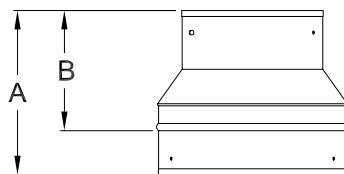
Flex Liner Adapter Dimensions		
Code	A	B
5LAF	5 3/4	3 7/8
6LAF	5 3/4	3 7/8
7LAF	5 3/4	3 7/8
8LAF	5 3/4	3 7/8

Increases and Reducers (LR and LI) Designed to increase or reduce the size of an EXCELiner to accommodate a range of flue sizes, appliances and installations. *Note: Increasing or decreasing chimney size can have a negative impact of chimney performance and safety. Use these components only when appropriate.*



INCHES

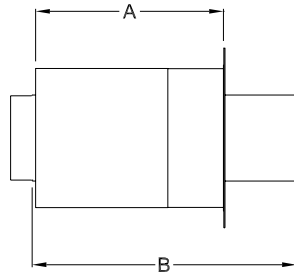
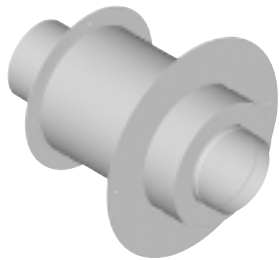
Increaser Dimensions		
Code	A	B
LI56	6 1/4	4 1/16
LI67	6 1/4	4 1/16
LI78	6 1/4	4 1/16
LI57	7	4 13/16
LI68	7	4 13/16



Reducer Dimensions		
Code	A	B
RI65	6 1/4	4 1/16
RI76	6 1/4	4 1/16
RI87	6 1/4	4 1/16
RI75	7	4 13/16
RI86	7	4 13/16

EXCELiner Product Descriptions

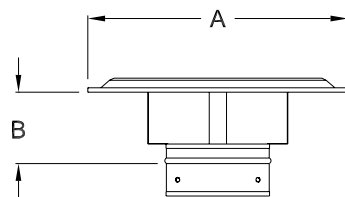
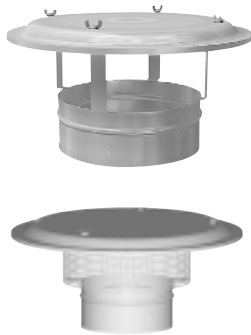
Insulated Thimble (ITH) The ITH is tested and listed to connect through a combustible wall into a masonry chimney. It is adjustable to accommodate wall thicknesses up to 10".



INCHES

Thimble Dimensions			
Code	A MIN.	A MAX.	B
5ITH	7 1/2	13	20
6ITH	7 1/2	13	20
7ITH	7 1/2	13	20
8ITH	7 1/2	13	20

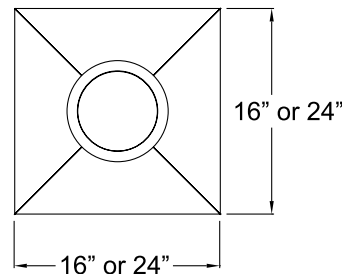
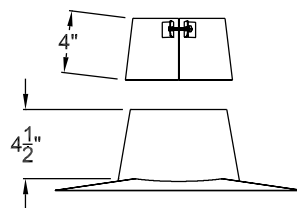
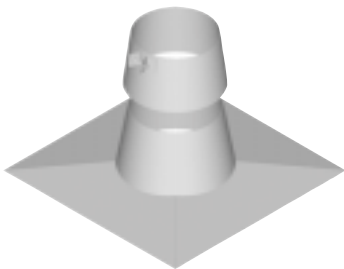
Rain Cap (LCR and LCD) EXCELiner rain caps are made entirely of type 304 stainless steel. The rain cap top is held in place with four wing nuts so it can be removed easily for cleaning without the need to remove the rain cap itself. Deluxe model has a stainless steel band. The optional Excel stainless steel spark screen (ERCS) can be installed if required.



INCHES

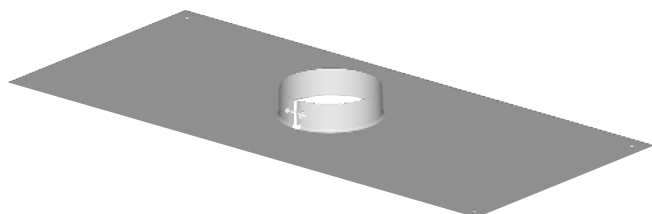
Rain Cap Dimensions		
Code	A	B
5LCR	13	4 7/8
6LCR	13	4 7/8
7LCR	13	5 1/8
8LCR	13	5 1/8

Top Support (LSA, LSAL, LSAG and LSAGL) The top support is designed to seal off the top of the liner system and support the vertical liner. It is available in either stainless steel or galvalume. There are two base sizes available - 16" X 16" and 24" X 24".



Base Support (LSB)

The base support is designed to seal and support a liner system. It is available in galvalume only.



EXCELiner Warranty

ICC warrants its stainless steel chimney liner to be free from functional failure due to defects in material or workmanship for as long as the masonry chimney it is installed in remains structurally sound. This warranty provides for replacement of any stainless steel components, except rain caps, which fail as a result of normal use with a residential freestanding fireplace, wood burning stove, furnace or boiler, including damage to the liner due to a chimney fire. This warranty does not cover damage caused to the original masonry chimney, or to the building, by chimney fires or misuse of the product.

Note: Chimney fires are dangerous and preventable, we strongly encourage you to have your chimney liner cleaned regularly.

ICC will only be responsible for repair or replacement of stainless steel components found to be defective under this warranty. In no event shall ICC be responsible for any incidental or consequential damage caused by defects in the stainless steel chimney liner system.

During the first ten years of the warranty ICC will repair or replace any defective stainless steel components, except rain caps, at no charge. For the balance of the warranty ICC will provide replacement stainless steel components at 50% of the current retail price at the time of the warranty claim. To obtain service under this warranty the defective liner should be returned to the dealer from whom it was purchased. If you are unable to return the liner to the original dealer contact ICC for the name of the closest dealer who can assist you. ICC will not be responsible for shipping charges related to warranty replacements.

ICC will not be responsible for labor of any kind required in the removal or replacement of a chimney liner system replaced under this warranty.

This liner is designed to vent residential heating oil, untreated wood, and natural or LP gas. It is designed to operate at a continuous temperature of 1200°F or less. It is not designed to vent coal burning appliances, condensing gas or condensing oil appliances. This warranty is void if the liner is used in an application for which it is not designed.

The chimney liner system must be installed according to the Installation Instructions included with every system at the time of purchase. If you do not have a set of installation instructions they are available free upon request. This warranty is void if the liner system is not installed according to the installation instructions.

This warranty may not be extended or modified by our agents or representatives. This warranty is in lieu of all other express warranties or guarantees of any kind.