

NEW INTRODUCTIONS



Quality Built, Value Priced.





Art Nouveau Tri Panel Screen

Black
Classic diamond design with an arched top across all three panels.

Item# 19232
51.5"W x 32"H

Art Nouveau Tool Set

Black
Matching tool set with diamond design and four tools.

Item# 19026
31"H



Art Nouveau Wood Holder

Black
Matching wood holder with diamond design.

Item# 19423
12.5"W x 17"D x 15"H



Garden Leaf Operable Door Screen

Black
Flat panel screen with operable doors decorated with leaf and vine details on sides.

Item# 19334
38.5"W x 29"H



Garden Leaf Tool Set

Black
Decorative leaf and vine design with four tools.

Item# 19027
31"H



Garden Leaf Wood Holder

Black
Decorative leaf and vine design that folds for easy storage.

Item# 19424
13"W x 18.5"D x 15.5"H

Mendocino Folding Screen

Antique Brass and Pewter
Classic four panel screen design is the perfect screen to complement any hearth.

Antique Brass
Item# 19238 51.5"W x 32"H

Pewter
Item# 19239 51.5"W x 32"H



Garden Leaf Operable Door Screen

Black
Flat panel screen with operable doors decorated with leaf and vine details on sides.

Item# 19334
38.5"W x 29"H

Chandler Tool Set

Satin Nickel, Antique Copper and Antique Brass
Modern three tool design with a cast base.

Satin Nickel
Item# 19032 24"H

Antique Copper
Item# 19033 24"H

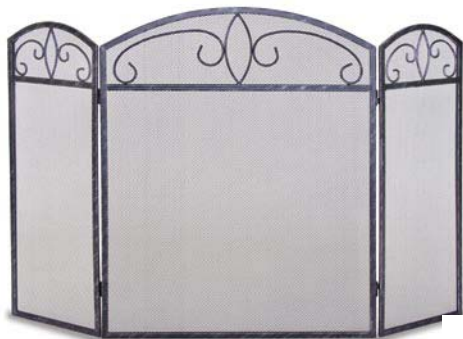
Antique Brass
Item# 19034 24"H



Forged Crest Tri Panel Screen

Brushed Graphite
Classic three panel screen with decorative scrolls on all three panels.

Item# 19233
48.75"W x 31"H



Forged Crest Tool Set

Brushed Graphite
Matching tool set with decorative scrolls and four tools.

Item# 19028
30.75"H



Forged Crest Wood Holder

Brushed Graphite
Matching wood holder with decorative scrolls.

Item# 19425
12"W x 19.25"D x 13.75"H

Colonial Tool Set

Black
Matching tool set with decorative scrolls and four tools.

Item# 19031
31.5"H



Colonial Tri Panel Screen

Black
Classic three panel screen with decorative scrolls on all three panels.

Item# 19234
52"W x 33"H



Colonial Wood Holder

Black
Matching wood holder with decorative scrolls that folds for easy storage.

Item# 19426
10"W x 18.5"D x 13"H



Belvedere Folding Screen

Antique Brass and Pewter
Classic four panel screen design is the perfect screen to complement any hearth.

Antique Brass
Item# 19241 44"W x 28"H

Pewter
Item# 19242 44"W x 28"H

Marin Tool Set

Black
Four tools suspended from a cast iron yoke. Three handle finishes available.

Antique Copper
Item# 19039 27"H

Brass
Item# 19040 27"H

Pewter
Item# 19041 27"H





**Kentfield
Tri Panel Screen**

Antique Copper / Black
and Pewter / Black
Decorative three panel screen with
delicate scrolls and leaf accents.

Antique Copper / Black
Item# 19236 52"W x 34.5"H

Pewter / Black
Item# 19237 52"W x 34.5"H

**Kentfield
Tool Set**

Black
Four tools suspended from a
cast iron yoke with a square
cast iron base. Two handle
finishes available.

Antique Copper
Item# 19035 32"H

Pewter
Item# 19036 32"H



**Kentfield
Wood Holder**

Antique Copper and Pewter
Classic styled wood holder that is a
perfect complement to any hearth.

Antique Copper
Item# 19427 21"L

Pewter
Item# 19428 21"L



**Tiburon
Tri Panel Screen**

Satin Nickel
Time honored contemporary three
panel screen.

Item# 19240
52.25"W x 32"H

**Sausalito
Folding Screen**

Satin Nickel / Black
Classic four panel screen design.

Item# 19243
42"W x 28"H



**Sonoma
Tool Set**

Black
Four tools suspended from a
cast iron yoke with a square
cast iron base. Two handle
finishes available.

Antique Brass
Item# 19037 23.5"H

Pewter
Item# 19038 23.5"H



**Elements
Tri Panel Screen**

Black
Striking flat top three panel screen.

Item# 19235
54.5"W x 30"H

Monterey Tool Set

Black

Four tools suspended from a cast iron yoke with a cast iron base and satin nickel handles.

Item# 19030
29"H



Garden Vine Sliding Door Screen

Black

For those who demand the best in style and craftsmanship.

Item# 19335
38"W x 31"H



Horizon Arch Base Flat Panel Screen

Black

A perfect blend of form and function.

Item# 19263
39"W x 31.75"H

Gas Valve Cover

Black, Satin Nickel, Antique Brass and Brass
Gas valve cover with neck. 2-1/8" dia. top plate, 5/8" hole - 1" dia. threads, and is 2" long.

Master pack of 12

Black

Item# 19700 2"L x 2.125"D

Satin Nickel

Item# 19701 2"L x 2.125"D

Antique Brass

Item# 19702 2"L x 2.125"D

Brass

Item# 19703 2"L x 2.125"D



Victorian Key 1/4" Stem

Black, Satin Nickel, Antique Brass and Brass
Gas valve key with decorative flourish design. Four colors to chose from. Master pack of 12

Black

Item# 19704 3.75" L

Satin Nickel

Item# 19706 3.75" L

Antique Brass

Item# 19708 3.75" L

Brass

Item# 19710 3.75" L



Victorian Key 5/16" Stem

Black, Satin Nickel, Antique Brass and Brass
Gas valve key with decorative flourish design. Four colors to chose from. Master pack of 12

Black

Item# 19705 3.75" L

Satin Nickel

Item# 19707 3.75" L

Antique Brass

Item# 19709 3.75" L

Brass

Item# 19711 3.75" L





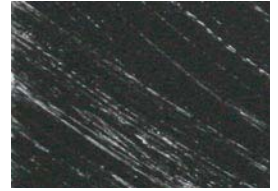
Antique Brass



Antique Copper



Black



Brushed Graphite



Pewter



Satin Nickel



Brass

10-Year Limited Warranty:

Pilgrim guarantees the materials and workmanship of its Napa Forge products for 10 years. Pilgrim will, at its discretion, repair or replace, free of charge, any Napa Forge item which proves to be defective due to normal use.

The warranty gives you specific legal rights, and you may also have other rights which vary from state to state. Some states do not allow the exclusion or limitation of incidental or consequential damages, so the above limitation or exclusion may not apply to you. Some states do not allow limitation on how long an implied warranty lasts, so the above limitation may not apply to you.

Limit of Liability:

In no event shall Pilgrim Home and Hearth, LLC be liable for any indirect, incidental or consequential damages from the sale or use of the product. The disclaimer applies both during and after the terms of this warranty.

Note: Due to Pilgrim's ongoing commitment to quality, some specifications may change without notice. Dimensions and weight are to be used as general guidelines only. Actual product dimensions may be +/- 1/2" from published figures.

