

ALDERLEA T5 LE

PREMIUM CAST-IRON OVER STEEL
CATALYTIC-FREE WOOD STOVE

**PACIFIC
ENERGY**

ALDERLEA T5 LE

ALDERLEA T5 CLASSIC LE



ALDERLEA T5 LE

CAST-IRON OVER STEEL

FREESTANDING STOVE

ALDER

CATALYTIC-FREE TECHNOLOGY

✓ MORE DURABLE

✓ MORE RELIABLE



Heat Output Cord Wood

72,000 BTU

38,200 BTU EPA Test Fuel

Efficiency (HHV)	71.3%
Emissions	1.8 gm/hr.
Log Size (recommended)	16"
Log Size (max)	18"
Firebox Size	2.1 cu.ft.
Glass Viewing Area	163 sq.in.
Weight	490 lb.



WARMING SHELVES

In true pioneer style, Alderlea woodstoves have a practical side. The T5 allows meals to be prepared effortlessly with swing-out warming shelves to reveal a concealed cooking surface – take on the next power outage with cooking and warming space to spare!

EPA 2020
CERTIFIED

2
GRAMS
PER
HOUR
OR LESS

ALDERLEA T5 LE

With elegant, historic styling that adds to the decor of any room, the T5 LE combines the best of cast iron and steel stoves: it offers radiant and convective heat, with a concealed cooktop and a huge glass huge glass window for a clean view of the flame. It's an easy-to-light, easy-to use, long-burning wood heater with old world charm and unmatched durability.

ALDERLEA T5 CLASSIC LE

The timeless beauty of cast iron with the added grace of porcelain enamel - the Alderlea T5 Classic LE is full of old-world charm and elegance, and boasts an outstanding list of standard features.

FEATURES

- EPA 2020 Certified
- Reliable, Durable Catalytic-Free Technology
- Extended Burn Technology (EBT)
- Air wash system for super clean ceramic glass
- Floating Firebox for extended stove life
- 304 Stainless Steel Baffle, insulation cover, rails and flame shield
- Boost air for easy lighting
- Single lever air control
- Easy to use ash disposal system
- Swing out food warming shelves
- Concealed cooktop fits 6" x 13" pan
- Inside and outside combustion air capable
- Fits close wall clearances without heat shields
- Mobile Home approved
- North-South loading

PERFORMANCE OPTIONS

- Temperature-Actuated
- Variable-Speed Blower

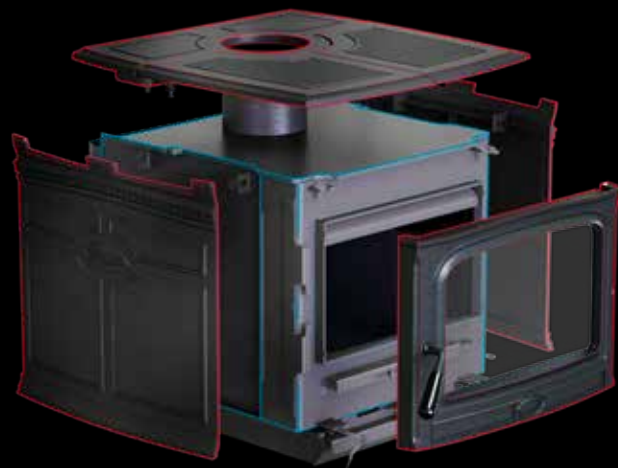
LEA T5 CLASSIC LE

PORCELAIN ENAMEL CAST-IRON OVER STEEL
FREESTANDING STOVE

 **EASIER TO OPERATE**



FEATURED TECHNOLOGIES



CAST IRON OVER STEEL

Until we pioneered the Alderlea line, and its revolutionary iron-wrapped steel firebox, a cast-iron stove was just that: cast iron. The Alderlea design makes the most of each metal: the steel stove and floating firebox is free to expand and contract, and its design maximizes convective heat efficiency, while the cast iron wrapping provides radiant heat. This superior system greatly extends longevity over an all cast stove. Metal fatigue is no longer a factor, allowing us to offer the industry's first lifetime warranty on a cast stove.

This technical innovation lives "under the skin" of the Alderlea line, which maintains the beloved traditional woodstove appearance. We say it's "powered by design, and crafted by tradition".

BAFFLE SYSTEM

Pacific Energy leads the industry in premium catalytic-free clean burn technology. Our unique high capacity baffle system preheats secondary combustion air for an extremely effective reburn. By burning the combustible elements in the air, we improve our stove's environmental performance while significantly reducing the amount of wood that is consumed.

EBT EXTENDED BURN TECHNOLOGY

Our second-generation Extended Burn Technology, or EBT, precisely regulates secondary airflow based on vacuum created by the chimney for a longer, cleaner, more economical burn. This automatically adjusts the secondary combustion system, for a cleaner, more efficient burn and extended burn time.

FLOATING FIREBOX

All fireboxes are subjected to wild extremes of temperatures. Solidly designed with steel brick support rails, our legendary floating system allows key parts to freely expand and contract to drastically reduce metal fatigue and add years of life to the entire appliance. The high capacity stainless steel baffle (part of the clean-burning secondary combustion system) and the flame shield (which protects the stove top from intense heat) are integral components of our legendary floating firebox system.

DESIGN OPTIONS

Alderlea T5 Classic LE is available in three porcelain enamel colours – Majolica, Sunset Red, and Antique White (limited availability).



Majolica



Sunset Red

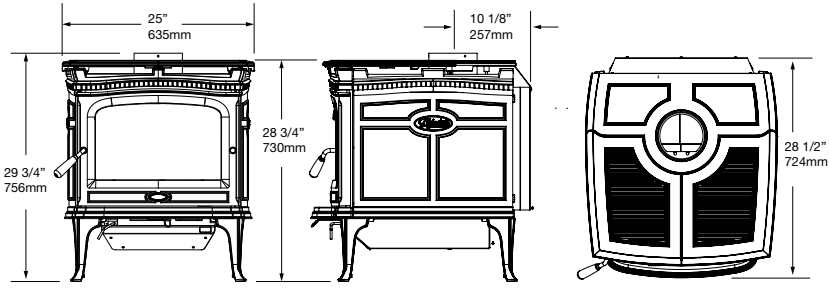


Antique White
limited availability



FOR MORE INFORMATION VISIT
www.pacificenergy.net

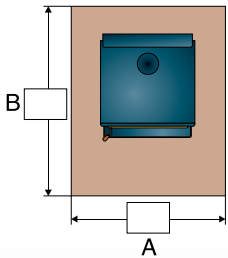
PRODUCT DIMENSIONS



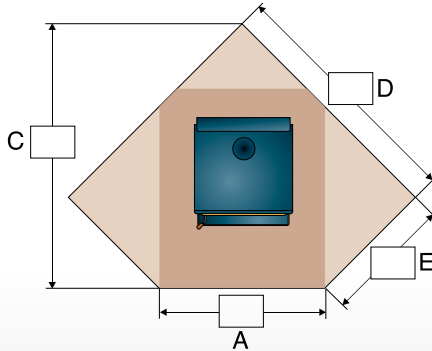
- AIR WASH**
A SYSTEM BY PACIFIC ENERGY
- BAFFLE SYSTEM**
- CAST IRON OVER STEEL**
- EBT EXTENDED BURN**
- FLOATING FIREBOX**
- KNIFE EDGE DOOR**
- SELF SEALING ASH DUMP**
- SINGLE LEVER**
AIR CONTROL

FLOOR PROTECTOR DIMENSIONS

STRAIGHT HEARTH



CORNER HEARTH



CANADA

	A	B	C	D	E
Minimum (Not extended to back wall)	40"	50 3/4"	-	-	-
Residential, single wall, vertical connector	40"	54 3/4"	62 3/8"	58 1/4"	30"
Residential, double wall, vertical connector	40"	47 3/4"	58 1/8"	55 1/4"	27"
Alcove, double wall, connector	40"	52 3/4"	-	-	-
Mobile home	40"	50 3/4"	58 1/8"	55 1/4"	27"

USA

	A	B	C	D	E
Minimum (Not extended to back wall)	34"	40 3/4"	-	-	-
Residential, single wall, vertical connector	34"	52 3/4"	60 3/8"	54 3/4"	30 5/8"
Residential, double wall, vertical connector	34"	45 3/4"	56 1/8"	51 3/4"	27 5/8"
Alcove, double wall, connector	34"	45 3/4"	-	-	-
Mobile home	34"	45 3/4"	56 1/8"	51 3/4"	27 5/8"

CLEARANCES TO COMBUSTIBLES

	From top of stove to ceiling	STRAIGHT (VERTICAL CONNECTOR)				CORNER		ALCOVE			
		A	B	C	D	E	F	G	H	I	J
RESIDENTIAL SINGLE WALL CONNECTOR	55 1/4"	8"	14"	18"	26"	7"	21"	N/A	N/A	N/A	N/A
RESIDENTIAL DOUBLE WALL CONNECTOR	55 1/4"	5"	14"	15"	26"	4"	18"	5"	14"	15"	26"
MOBILE HOME DOUBLE WALL CONNECTOR	55 1/4"	5"	14"	14"	26"	4"	18"	N/A	N/A	N/A	N/A

Pacific Energy is committed to continuous product improvement and innovation. As a result, appearance and specifications of the products featured in this brochure are subject to change without notice. For more information, please visit pacificenergy.net

